



IN LINE WITH NEW TECHNOLOGIES

Bushes & Sleeves

Cobalt Alloys

Stellite 4, Stellite 6, Stellite 12,
Tribaloy T400/T800

In accordance with Customer Requirement



Casting
Engineering
Manufacturing

 **FOCUS**
INDUSTRIAL SOLUTIONS

www.focus-ed.com

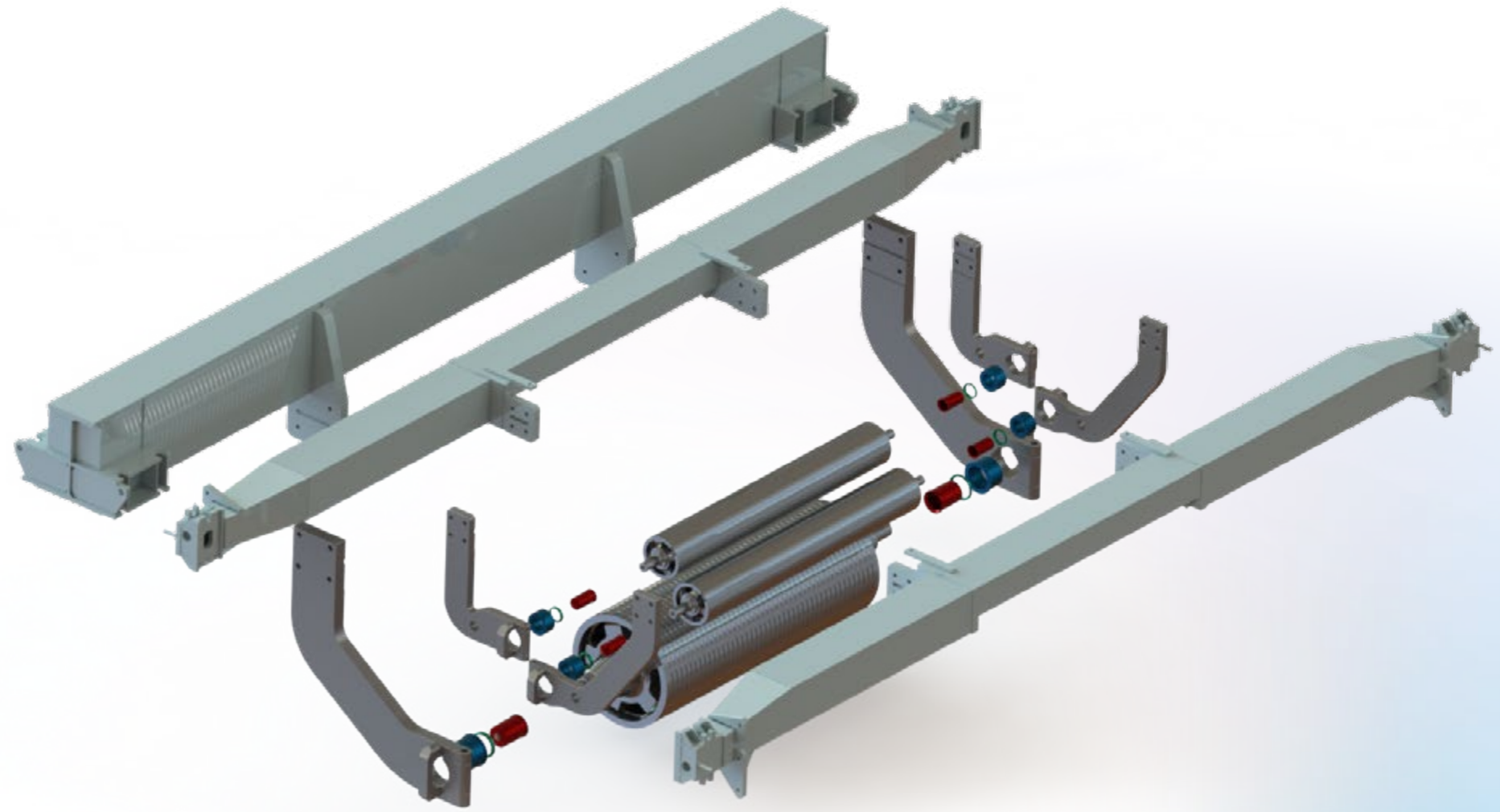
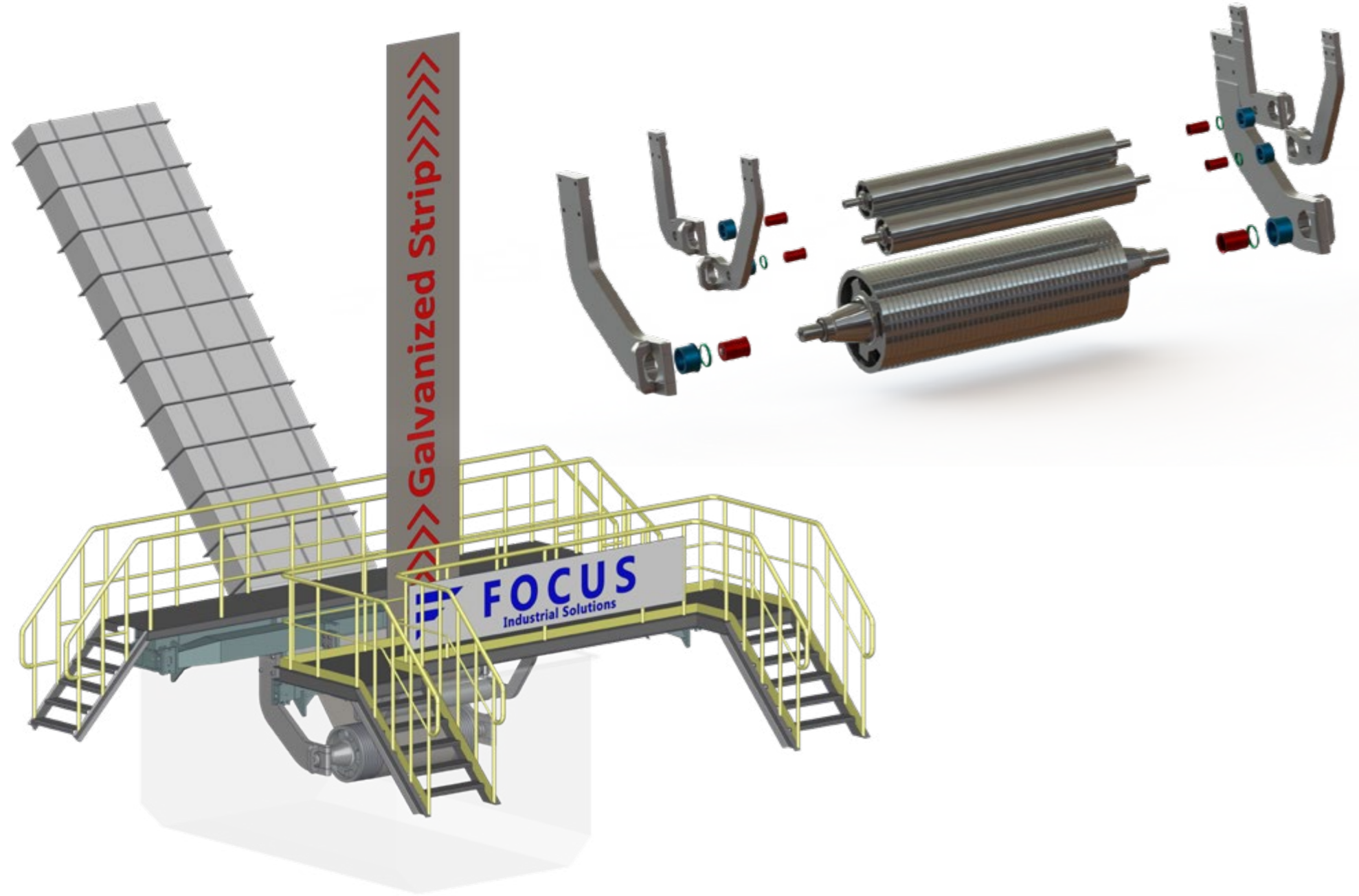


Stellite 4, Stellite 6, Stellite 12
Tribaloy T400/T800
Cobalt Alloy
Any special alloys

Focus Engineering Co. has more than 20 years of experience in Flat Steel, Iron&Steel Factories and Continuous Hot-Dip Galvanizing Lines(CGL). Applying our longtime knowledges to the production and development, We manufacture followings;

- Sink Roll, Stabilizing Roll and Correcting Roll
- Arms of Sink Roll, Stabilizing Roll and Correcting Rolls,
- Bushes & Sleeves of Sink & Stabilizing Rolls by Stellite 4, Stellite 6, Stellite 12, Tribaloy T400/T800, Cobalt Alloys and any special alloys according customers requirements.







The Sink Roll immerses the strip in the molten alloy, while the Stabilizing and Correcting Rolls steer and control the strip before it emerges from the Zinc Bath.

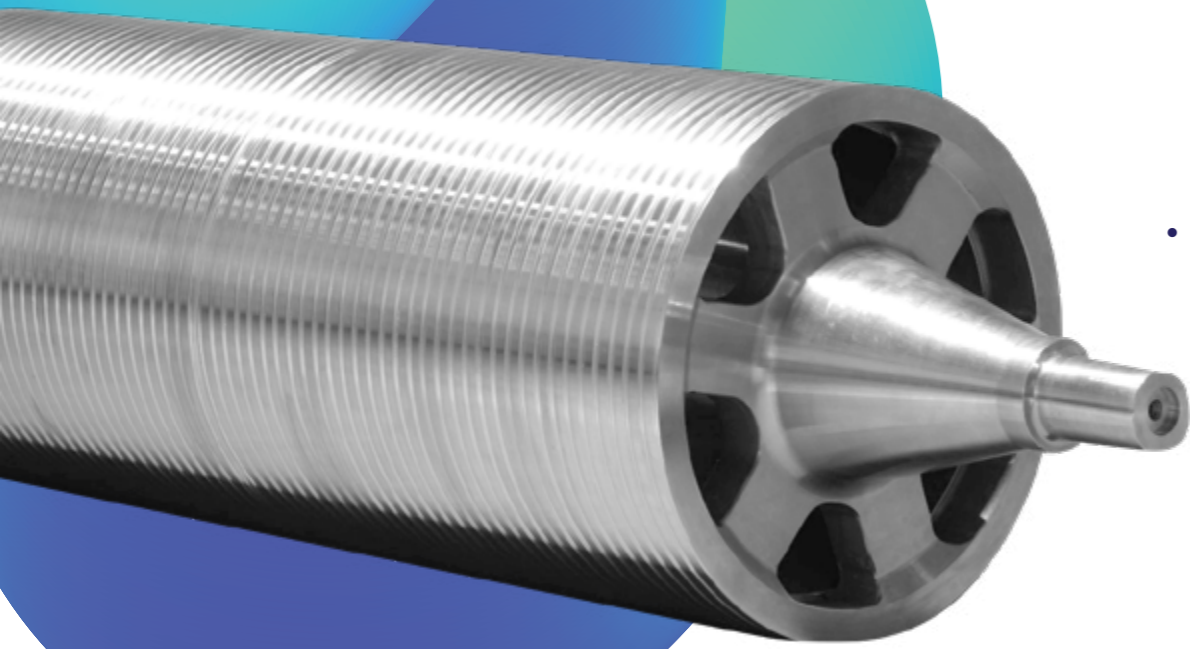
The Sink Roll is one of the key factors determining the production quality and production efficiency of the Continuous Galvanizing Line and has following properties;

- With centrifugal casting of Sink Roll Body, precision casting of assembly necks of Rolls,
- Mainly produced with 316L or 317L with a thermal coating of Roll Surface,
 - Outer Diameter is OD450mm
 - 50mm, OD500mm, OD550mm, OD600mm, OD610mm, OD650mm, OD720mm, OD800mm(OD50-OD2000mm) or according to drawing and requirement,
- Material and Test Standard is ASME, DIN, GB or according to drawing and requirement,
 - Working temperature is 450°C - 700°C

In the Continuous Hot-Dip Galvanizing Lines(CGL), Sink Roll, Stabilizing Roll and Correcting Roll are used to guide the strip in the Zinc Pot.

Bushes and Sleeves installed to the Motor and Operator side of the Sink, Stabilizing and Correcting Rolls are important for the following:

- Maximum wearing resistance at high temperature,
- Compensating angular misalignments, various forces,
- Improving the process efficiency and quality defects,
- Preventing line stoppages,
- Increasing the service lifetime of the zinc pot equipment (Sink Roll, Stabilizing Roll, Correcting Roll).





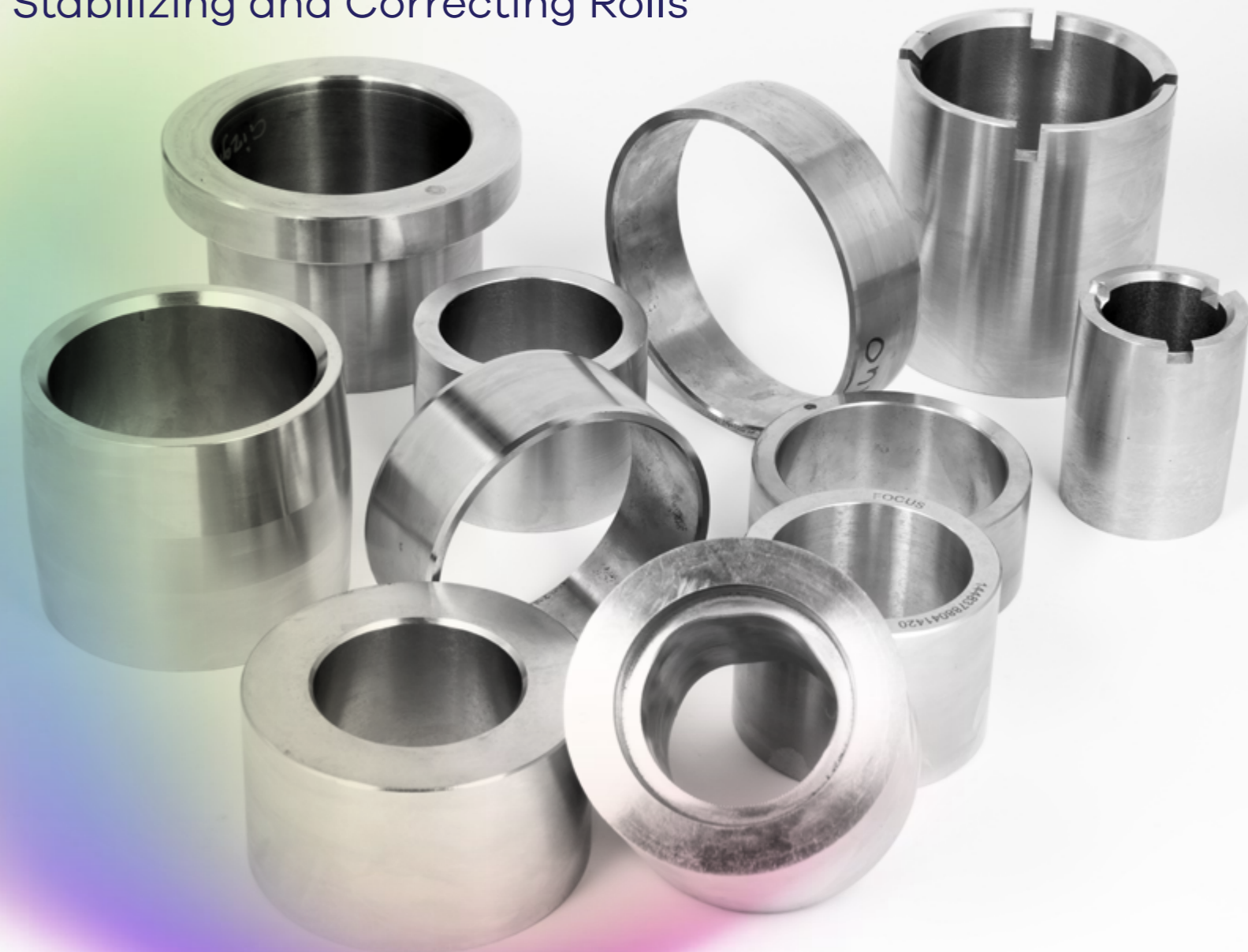
Sleeves

for Sink, Stabilizing and Correcting Rolls



Bushes

for Sink, Stabilizing and Correcting Rolls









Design

We design Sink , Stabilizing and Correcting Rolls, Arms and Bushes & Sleeves according to our customer's quality and technical requirements.



Planning

We check all customer's requests and plan production and quality parameters with team meeting. We also follow all production by using barcodes in order to have traceability of each product.



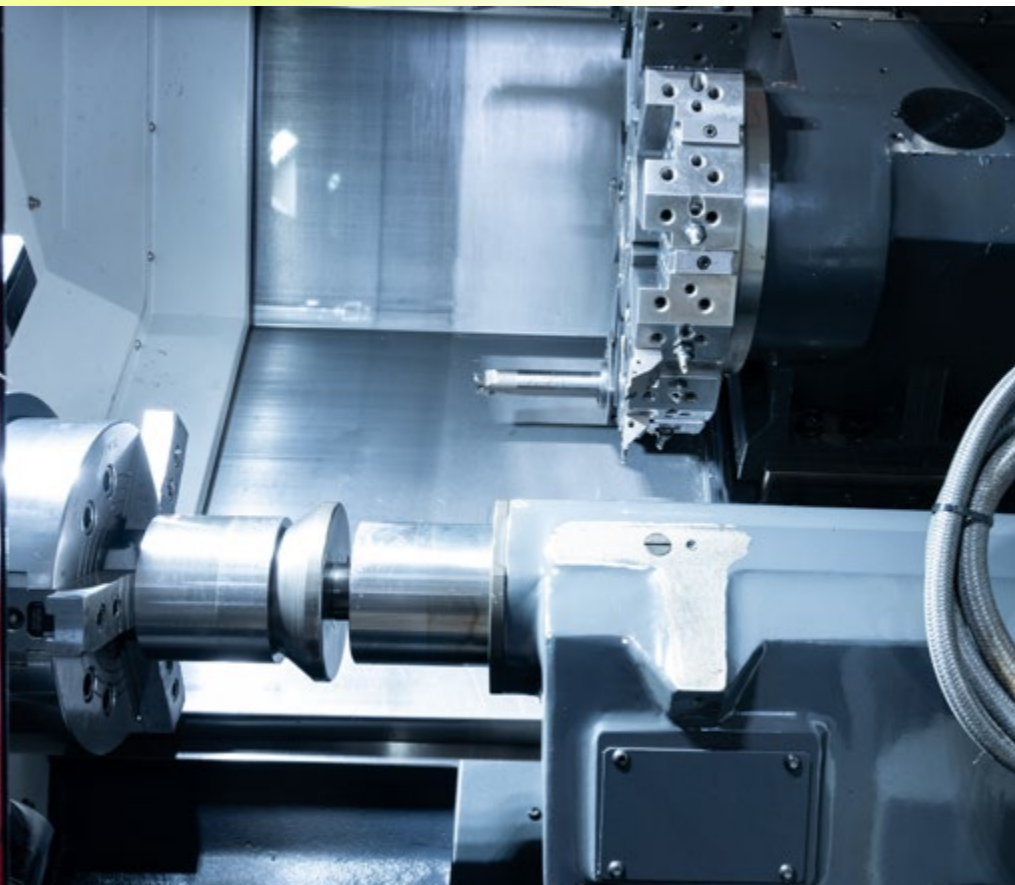


Casting





Production





Production

We manufacture Bushes & Sleeves based on which provides the best quality and extend product life cycle.





Quality

Quality Standards of the Bushes & Sleeves are strictly applied by us according to Customers' Technical Drawings, Mechanical and Chemical requirements.





PT & NT Test

Penetrant Test (PT) and Non-Destructive Test (NDT) are important steps during Quality Control before shipping the bushes and sleeves to the customer. Focus does PT and NDT Tests on all bushes and sleeves to ensure that there will be no quality issues at its customer.



R&D

At Focus R&D Laboratory, we cooperate not only with scientific institutions such as universities, but also with our customers who are pioneers in their own sectors, and thus, We are carrying the technologies currently used in the industry one step further with our experience.





Business Value

Our customers' business are valuable for us. We offer competitive price, short production time and extension of lifecycle of the Bushes & Sleeves manufactured by Centrifugal Casting to help to reduce production costs on the factory.

On Time

To keep loyalty of our customers, We are manufacturing and delivering our products on time with no delays.



Packaging and Shipping



We give a very big importance to packing of product to avoid any possible damage during the shipping.

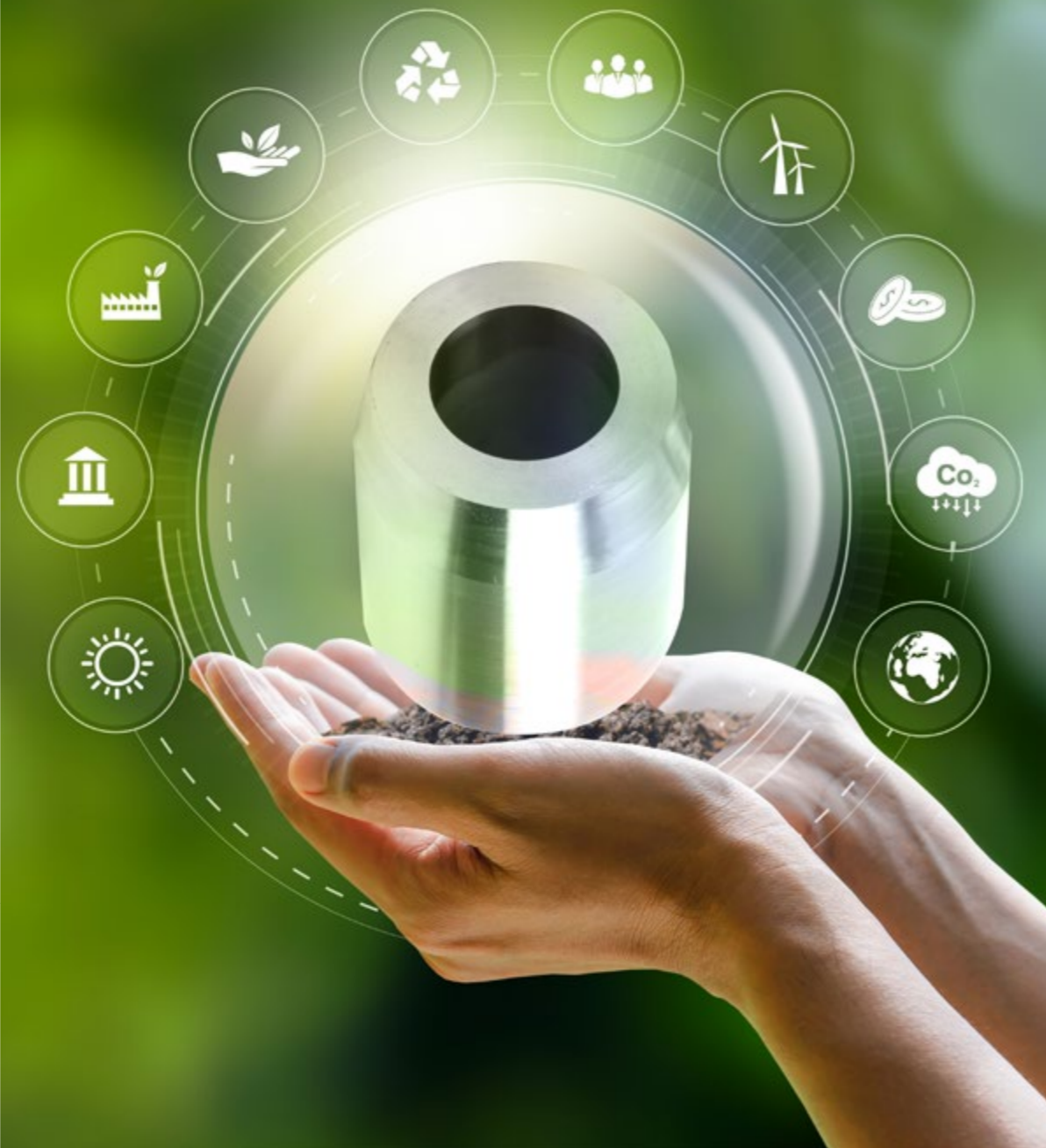
All products are protected with a good cover and arrive to your factory with no destruction.



Environment

We collect the used Bushes & Sleeves to recycle them.

We do not compromise on our zero waste environmental policy.



Chicago
USA
Branch

Duisburg
GERMANY
Branch

Istanbul/TURKEY

Mumbai
INDIA
Branch





Focus Engineering Co.

Kurtul Mahallesi Yalova Yolu Caddesi No:147
Gemlik, Bursa / Turkey
T: +90 224 524 87 10
F: +90 224 524 87 11
E: focus@focus-ed.com

Duisburg / Germany Office

OBERHAUSEN, Centro
Oberhausen, 46047, DEU

Chicago / USA Office

25 South Wacker
Chicago, 60606, USA



www.focus-ed.com

